

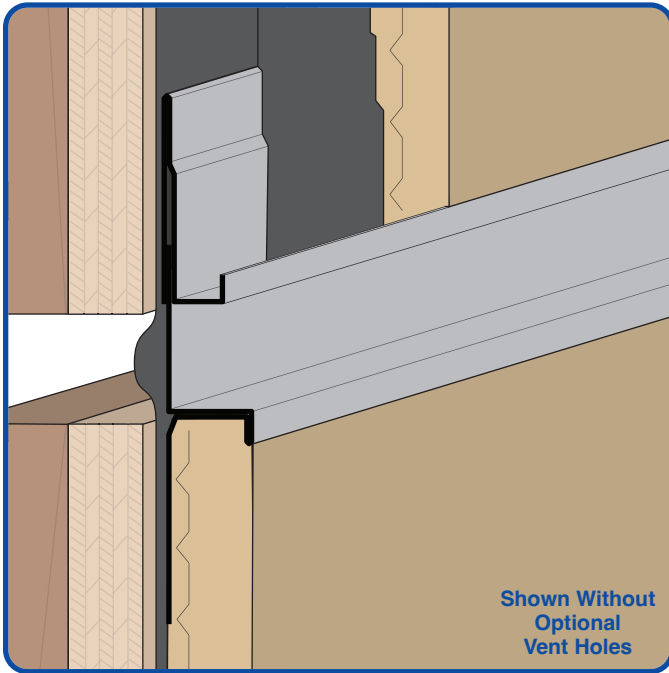


**PHONE:** (909) 993-5700  
**EMAIL:** sales@deluxebuildingproducts.com  
**LOCATION:** 1350 E. Lexington Ave., Pomona, CA 91766



[www.DeluxeBuildingProducts.com](http://www.DeluxeBuildingProducts.com)

## Deluxe Offset Expansion Channel Screed - Two-Piece



- ✓ Available Unventer or With Either 1/8" or 1/4" Vent Holes
- ✓ Available in Aluminum, Copper, Galvanized Steel (G90), Bonderized or Stainless Steel

The Deluxe Offset Expansion Channel Screed is a two piece adjustable version of our Offset Plaster Channel Screed that permits movement in a double stud condition or at a floor line.

### AVAILABLE DIMENSIONS

**X Sizes:** 3/8", 1/2", 3/4", 7/8", 1" or 1 3/8"

**Y Sizes:** 3/4", 1 1/2" or 2"

**Z Sizes:** 1/2", 3/4", 7/8", 1", 1 1/4", 1 3/8", 1 3/4" or 2"

**Length:** 120"

### Available Materials:

Aluminum, Bonderized, Copper, Galvanized Steel (G90) or Stainless Steel

### ASTM Codes:

All Accessories are fabricated from prime galvanized steel G60 (G90 upon request) zinc coating by the hot dipped method, conforming to steel and coating specification ASTM A-653/A-653M or zinc alloy meeting ASTM B-69. Stainless Steel A480/A480M A580M (Stainless Steel) For installation and placement instructions refer to ASTM C1063, C841 and C926.

### GET A QUOTE

**Company:** \_\_\_\_\_

**Name:** \_\_\_\_\_

**Address:** \_\_\_\_\_

**City:** \_\_\_\_\_

**State:** \_\_\_\_\_

**ZIP:** \_\_\_\_\_

**Phone:** \_\_\_\_\_

**Email:** \_\_\_\_\_

**Quantity:** \_\_\_\_\_

**Material:** \_\_\_\_\_

**X Size:** \_\_\_\_\_

**Y Size:** \_\_\_\_\_

**Z Size:** \_\_\_\_\_

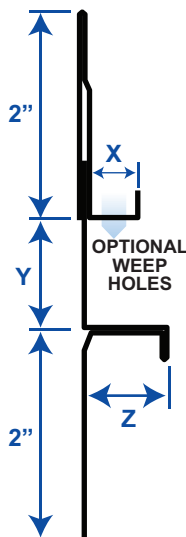
**Holes:** ☐ No Vent Holes

☐ 1/8" Vent Holes

☐ 1/4" Vent Holes

**Length:** \_\_\_\_\_

**Notes:** \_\_\_\_\_





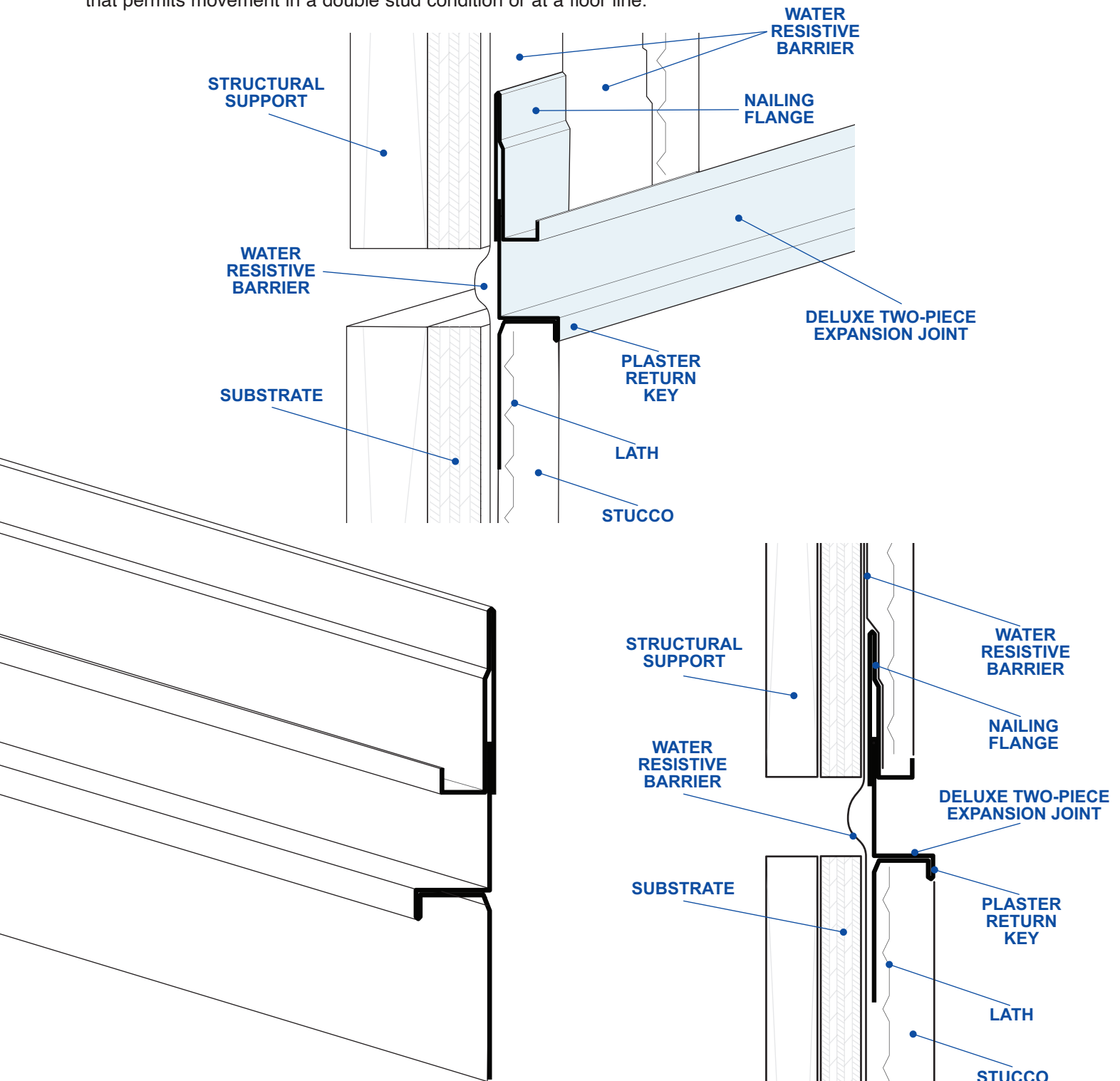
PHONE: (909) 993-5700  
EMAIL: sales@deluxebuildingproducts.com  
LOCATION: 1350 E. Lexington Ave., Pomona, CA 91766



[www.DeluxeBuildingProducts.com](http://www.DeluxeBuildingProducts.com)

## Deluxe Offset Expansion Channel Screed - Two-Piece

The Deluxe Offset Expansion Channel Screed is a two piece adjustable version of our Offset Plaster Channel Screed that permits movement in a double stud condition or at a floor line.



**NOTE:** This drawing is supplied solely to assist in the selection and application of product manufactured by Deluxe Building Products. This drawing is generic in nature and should not be used in design or construction without an independent evaluation by a qualified Architect or Engineer of Record.

©2025 Deluxe Building Products. All rights reserved worldwide. Product illustrations are for reference only.  
CA RESIDENTS: Please review Prop 65 by visiting [www.P65Warnings.ca.gov](http://www.P65Warnings.ca.gov)

REV 11.23.25.DOEK